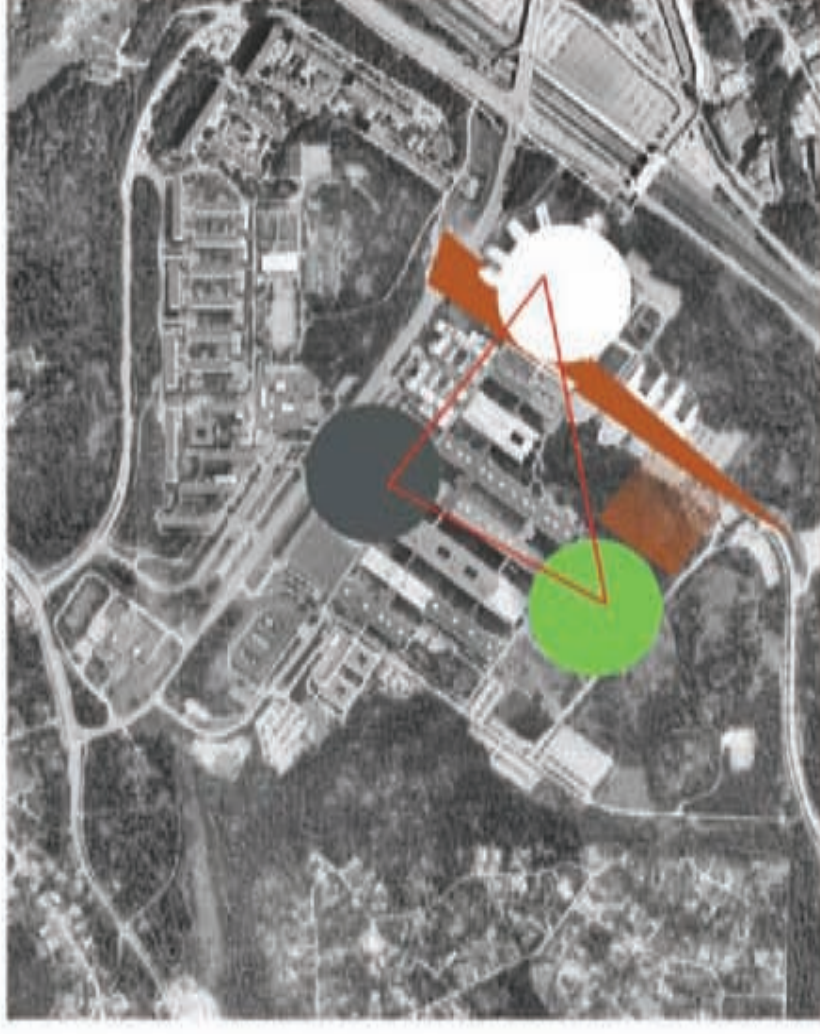




huddinge addition
master program architecture / space for healthcare, housing & work
maria berezecka

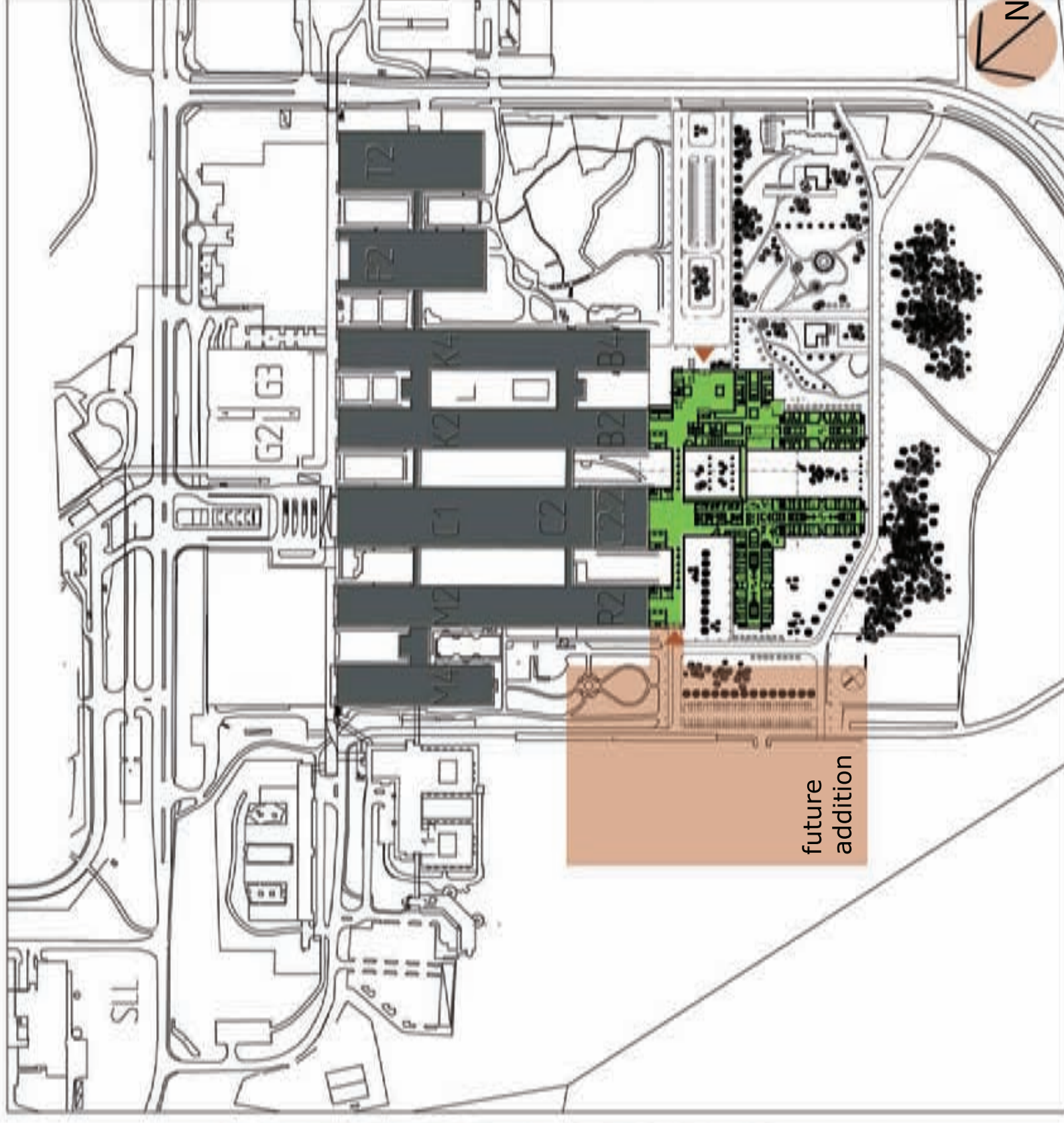




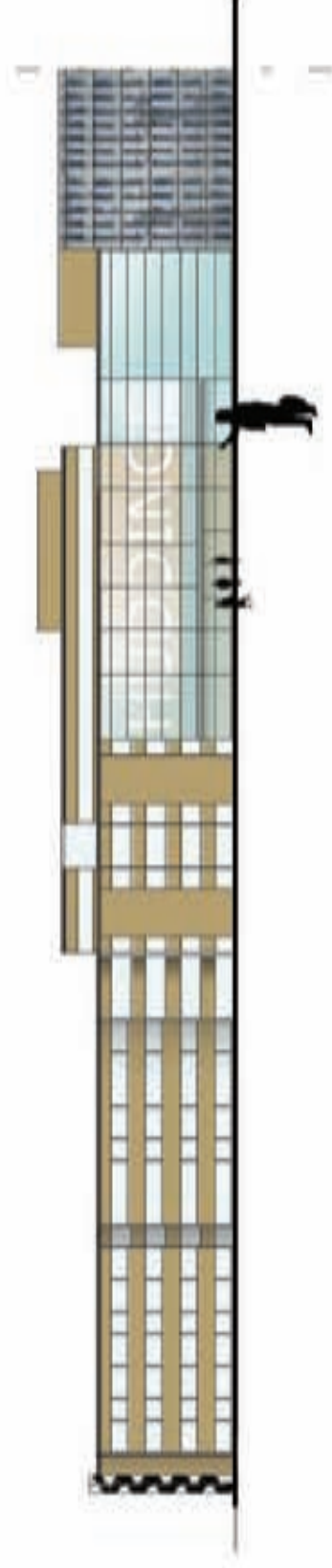
I place the new building in south side of the site on the back of the existing building to use light conditions and to create new entrances to Huddinge hospital and open up the old building for new communication possibilities.

This location makes hospital available from several directions and activates the street for commercial development.

The north-west side of the site is reserved for future addition.



site plan scale 1:400





The park around the hospital is an important element of the experience of hospital visit and should be accessible for disabled people. To make it attractive for several months of the year, you can plant the winter green plants. The park can serve as a "waiting space" or just a place for "get away from hospital environment"



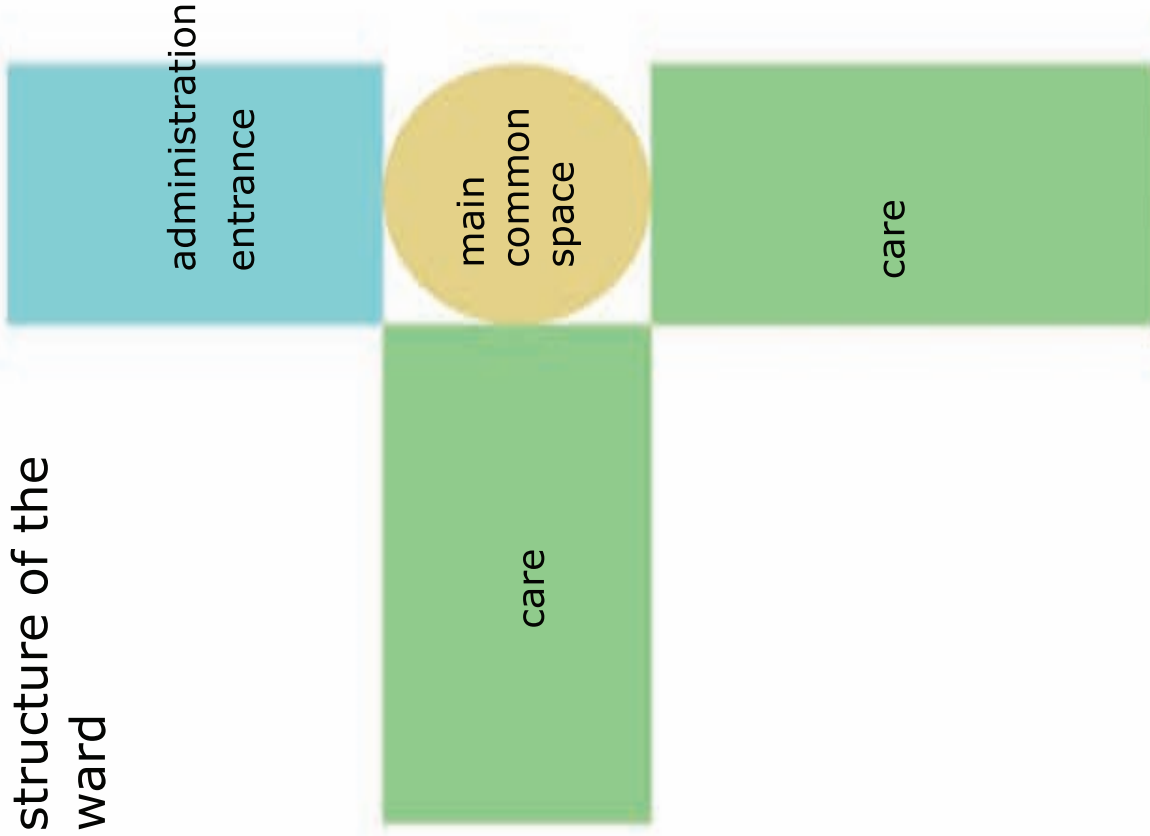
My intention is to create:

- good communication
- open spaces
- a positive first impression for patients and relatives when they arrive at hospital
- light lines
- a place that attracts the healthy side of the patient
- a peaceful environment for patients
- a good work place with opportunity to reassure breaks
- generous spaces with good opportunities to adapt to different health care needs

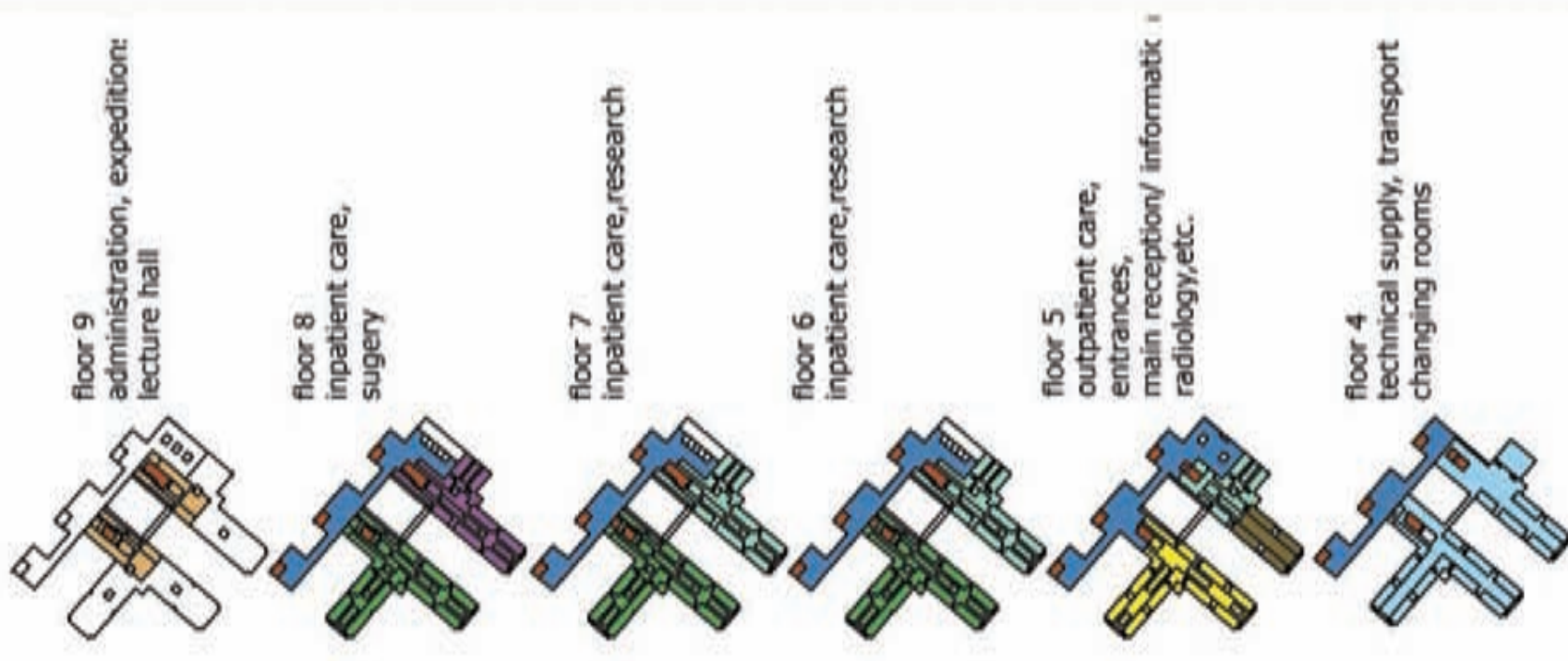
entrance area



structure of the ward



floors disposition



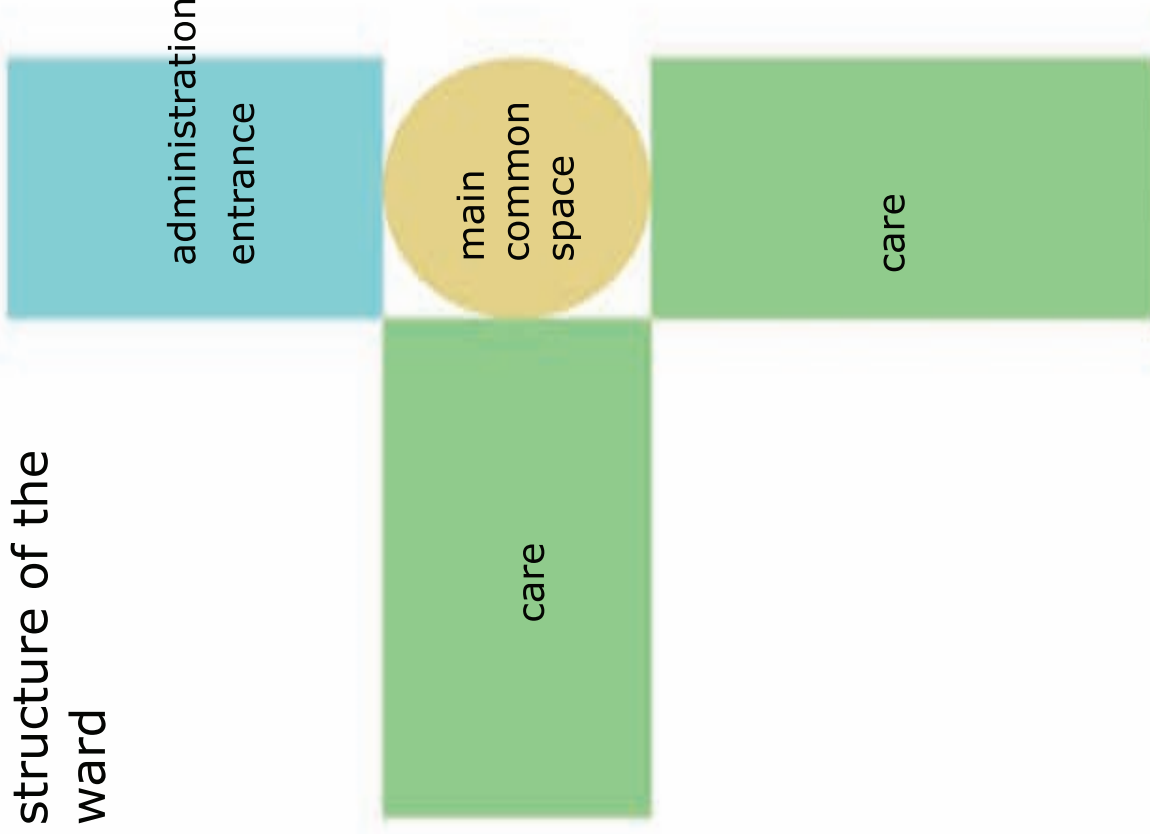
My intention is to create:

- good communication
- open spaces
- a positive first impression for patients and relatives when they arrive at hospital
- light lines
- a place that attracts the healthy side of the patient
- a peaceful environment for patients
- a good work place with opportunity to reassure breaks
- generous spaces with good opportunities to adapt to different health care needs

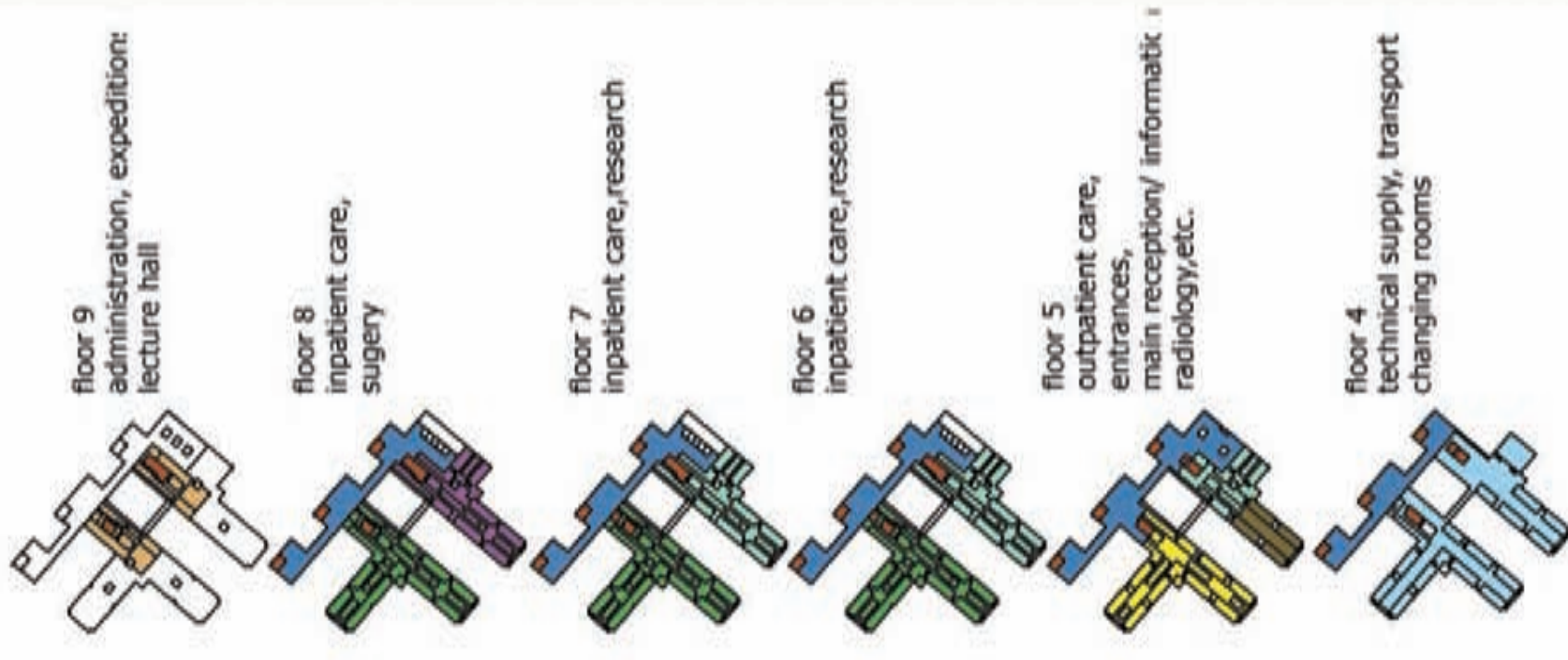
entrance area



structure of the ward



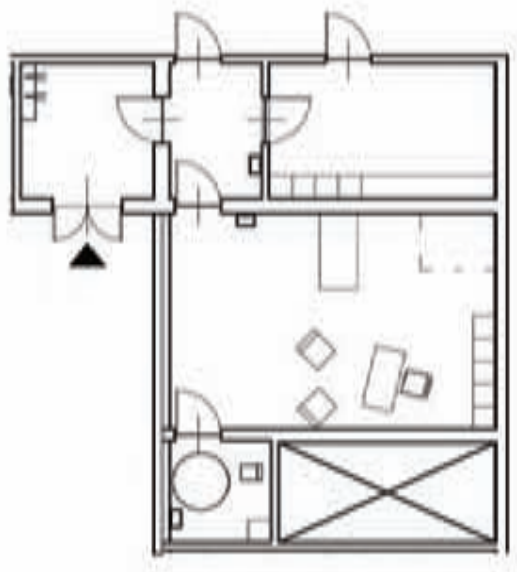
floors disposition



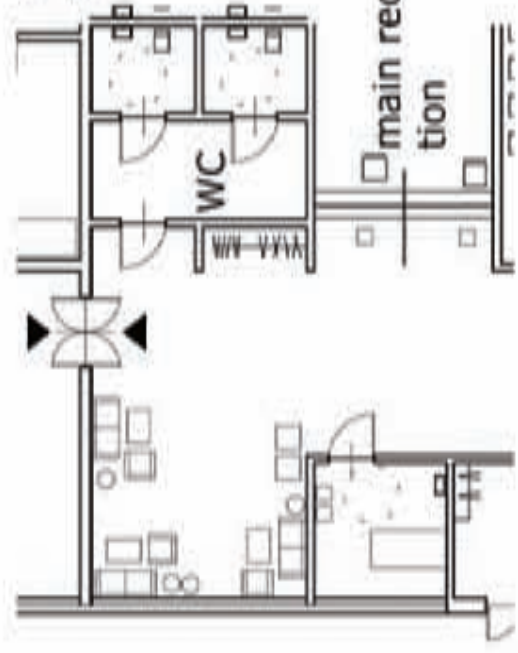
out patient care heart clinic

Out patient care, heart clinic
 Visitors met directly by the staff at main reception when they enter. The administrative areas are combined to support communication and cooperation.
 Out patient care is divided in to eight units with their own waiting space, secondary reception and toilets.

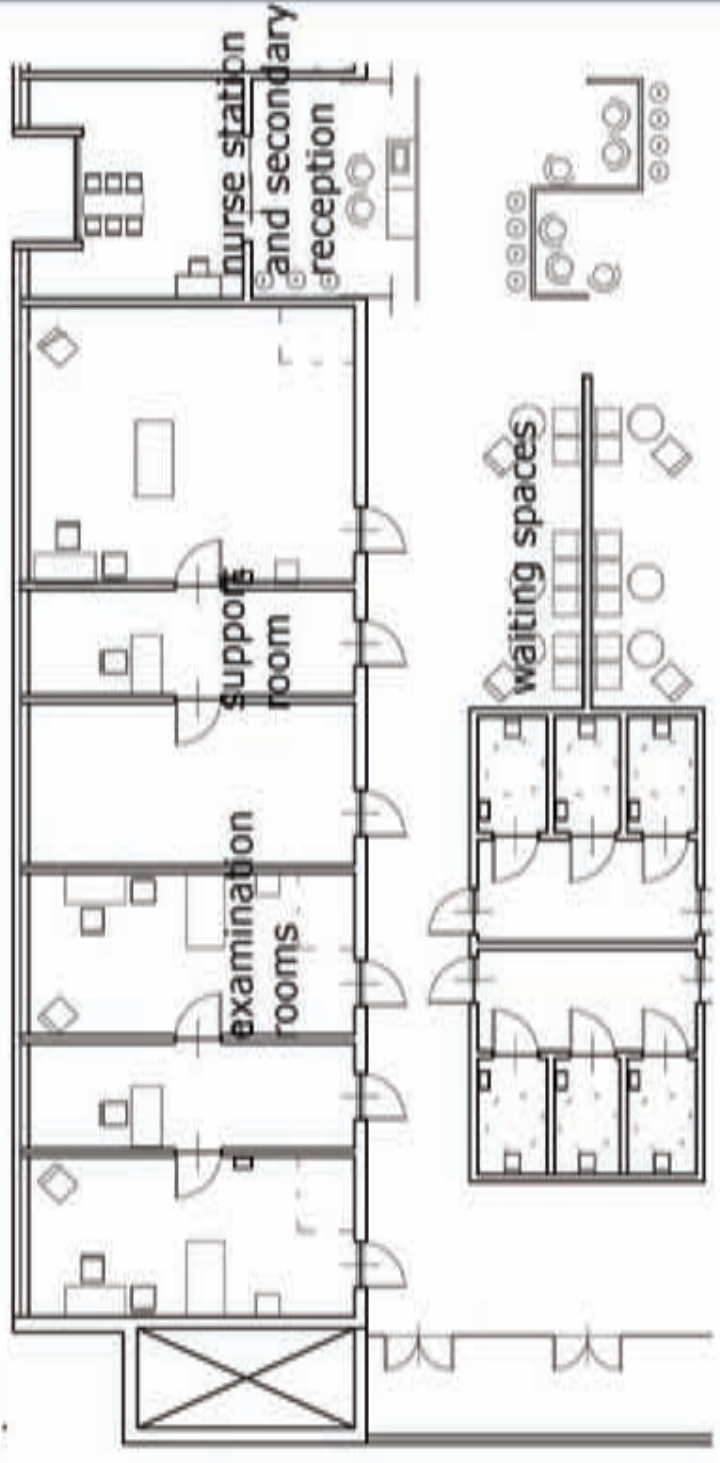
isolation rooms for infected patients with a separate entrance



waiting spaces



outpatient care unit



PLAN 5
 HERTZBERG

outpatient care, scale 1:100

- waiting spaces
- examination rooms
- support and staff rooms
- common space and relaxation area

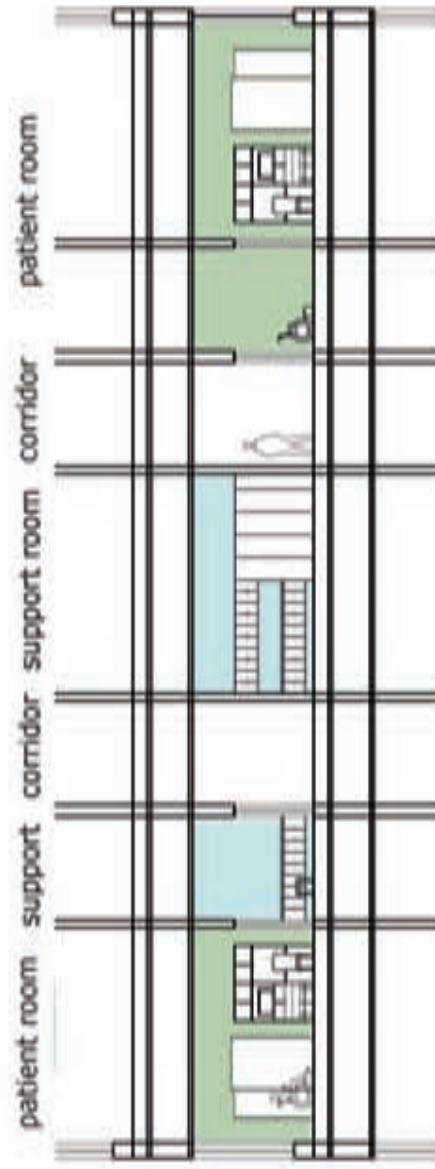
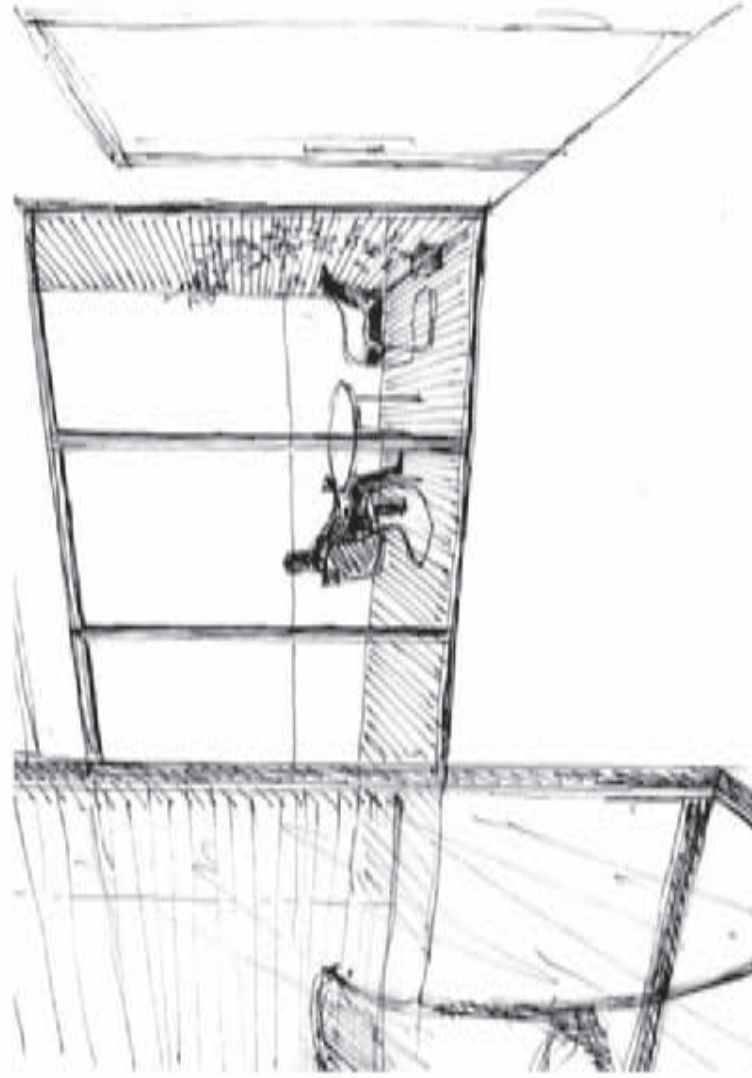


In patient care, heart clinic

The ward is located in two wings with 24 beds in each; it gives possibility to increase or decrease the number of patients or to separate day care in a wing. In the middle of each wing are nursing stations with additional extra space.

Different common places give more options how to spend their time in the hospital.

Staff haws separate entrance and generous space for work and rest, lunch room and the workspace is separated from the ward.

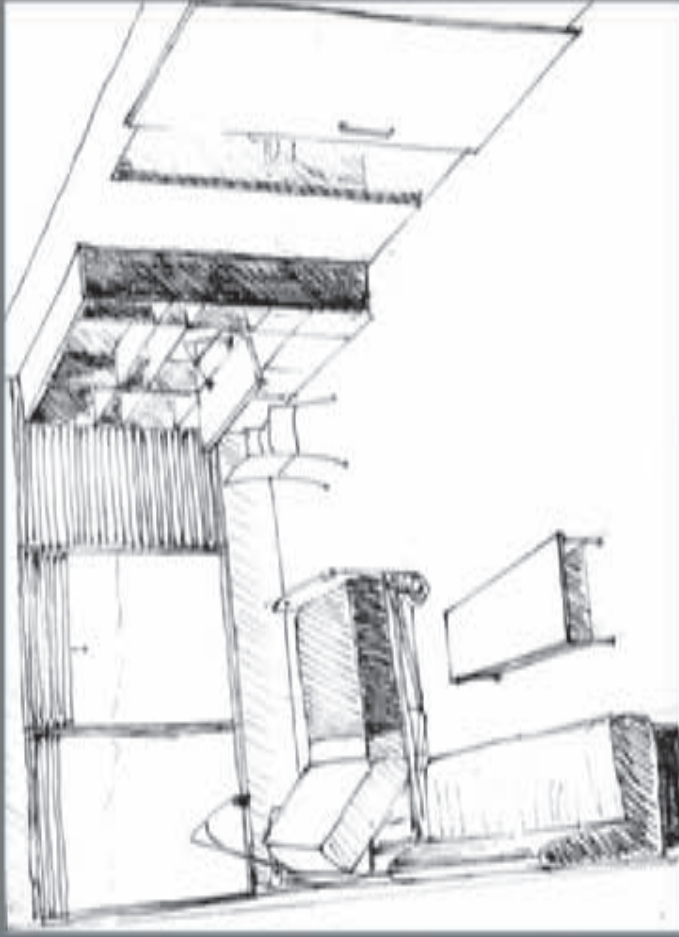
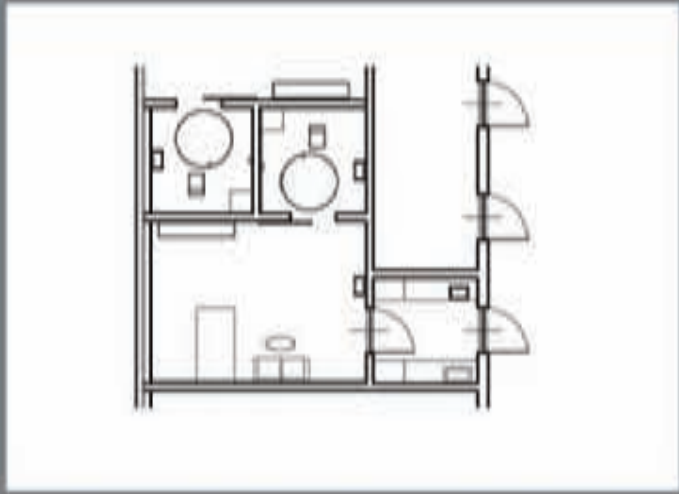


patient room support corridor support room corridor patient room



PLAN 6
VÄRDVÄNINGSAR

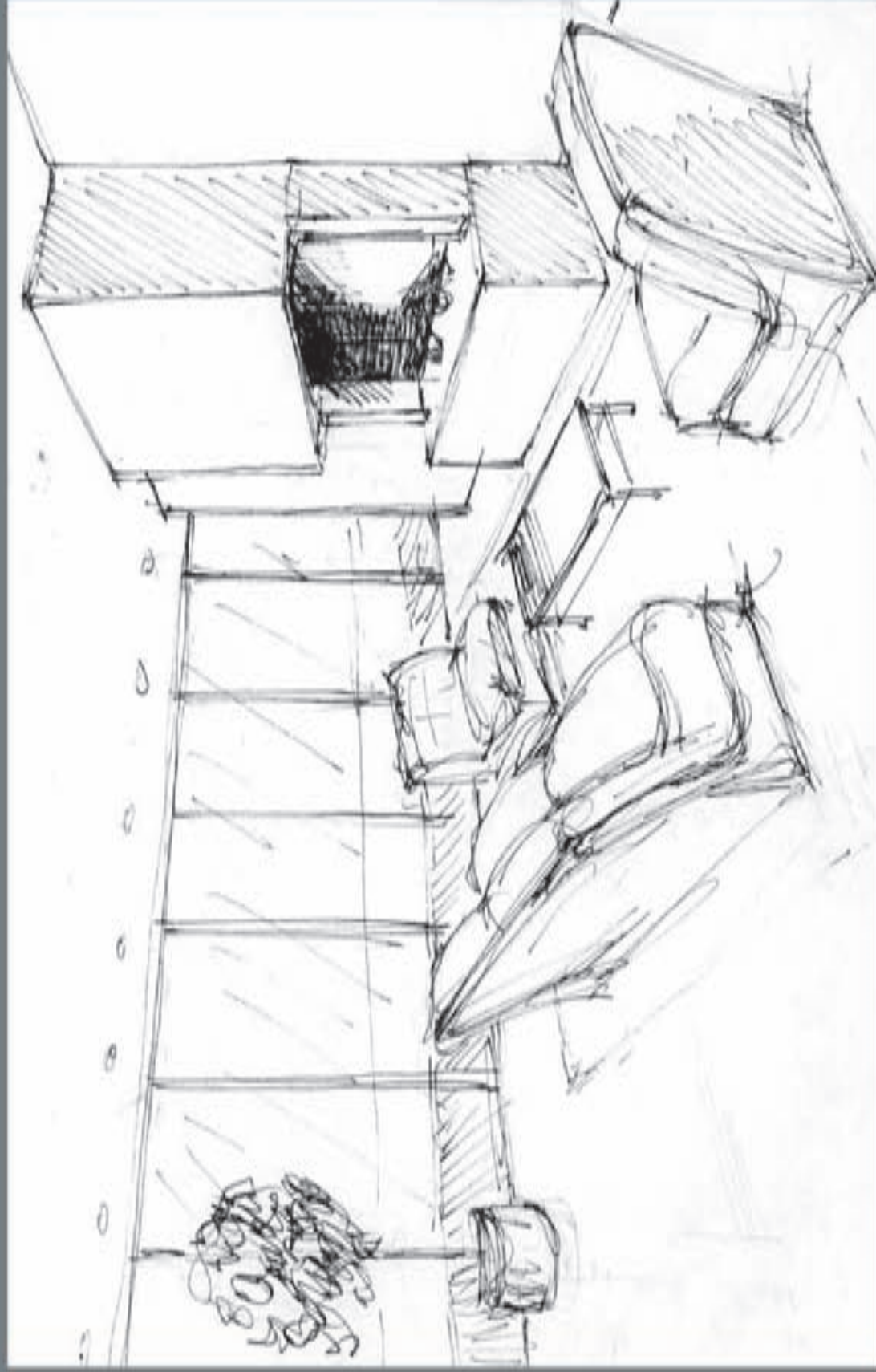
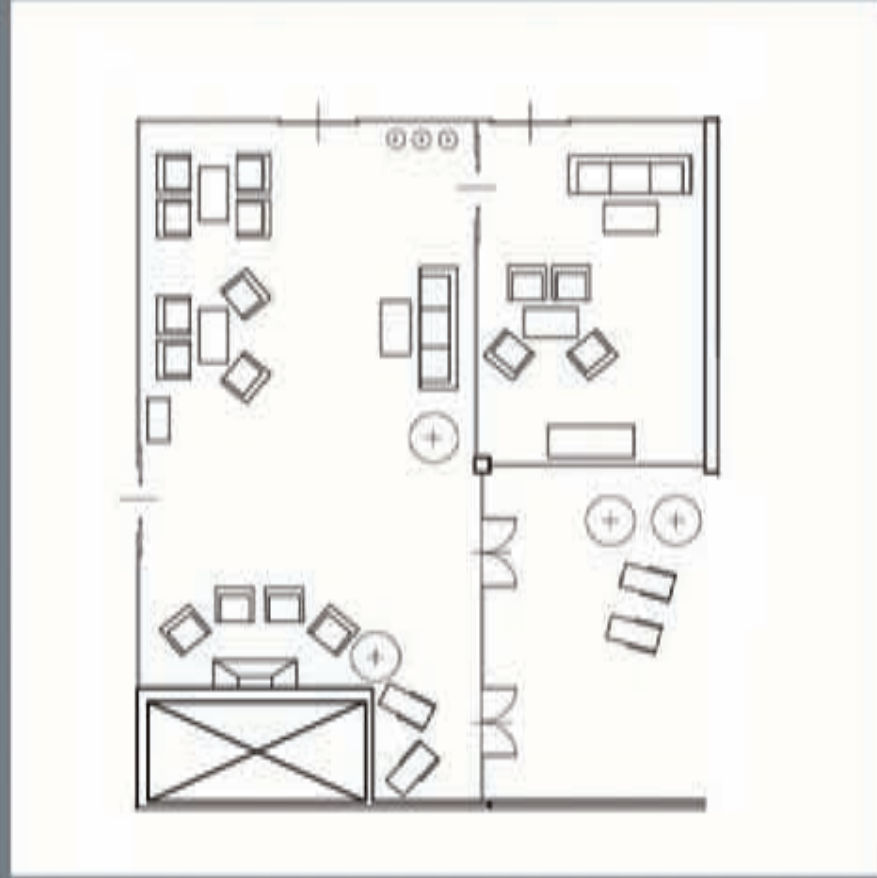




Nursing rooms

Nursing rooms have different variety of lighting, heavy and variable over patient bed, at the ceiling variable luminous light and reading lights. Nursing rooms has its own toilet, shower and disinfection equipment. Each patient has a closet for storage of their own thing in the room. With simple means the patient will be able to change their nursing room. It should be possible to hang up curtains or blinds to adjust day light. There is a sofa inside in the room. Sofa should be easy to move and pull out.

Common areas
The common areas in the ward have different characters and the balconies provide opportunities for out door relaxation



Personal spaces

Personal space includes a number of rooms for work and talk with flexible nature and of different sizes. Lunch room and break room are separated from the ward and form a recovery zone. There is an overnight room in the end of the staff area but still close to the ward and this can also be used as a relaxation room.

There are two nursing stations in each wing with additional room for personal working on the ward and a larger room for conversation or round meeting.

