

CHALMERS ARCHITECTURE -
SPACE FOR HEALTHCARE,
HOUSING & WORK - NEW
KAROLINSKA HUDDINSE
HOSPITAL - A.JODKO -
TEACHERS P.FRÖST,
I.MALMQVIST, B.GROSS

PAGE 1

INTRODUCTION

I DESIGNED THIS ADDITION WITH REQUIRED UNITS ACCORDING TO THE PROGRAMME WE WERE GIVEN BY THE HOSPITAL TO EXPAND THE EXISTING BUILDING. THE NEW BUILDING IS LIKE A BIG HOUSE OR HOTEL - NOT A HOSPITAL - TYING TOGETHER THE SPACES WITHIN. THE HOSPITAL DESIGN INCORPORATES A LARGE DEGREE OF FLEXIBILITY BASED

ON CONSTRUCTION GRID AND MODULENESS OF SPACE DIMENSIONS TO ACCOMMODATE FUTURE REQUIREMENTS REGARDING NEW TECHNOLOGY. THE KEY SUSTAINABLE FEATURES : CLOSENESS TO PUBLIC TRANSPORTATION, POSSIBLE BIKE PARKING AND A LOTS OF NATURAL DAYLIGHT GUARANTEED BY THE SLIMNESS OF THE BUILDING. THIS DESIGN ALSO ADDED A PATIENT HOTEL WITH 90 APARTMENTS. IT CAN BE USED AS HOTEL ROOMS FOR HOSPITAL VISITORS, THEIR RELATIVES, CONFERENCE ATTENDANTS, AS HOSPITAL OFFICES AND EVEN AS WARDS.

Site

CENTRAL TO THE BUILDING'S DESIGN IS ACCESS TO THE VIEWS OUTSIDE FROM THE ROOMS. INCORPORATING BIG AMOUNT OF PLANTING FACES THE OCCUPANTS WITH PEACE AND TRANQUILITY. THE BUILDING DESIGN HAS BEEN DEVELOPED ON SIDE OF A CLEAR CIRCULATION GRID**** WITH FEW MORE PARKING LOTS*** AND A NEWLY FORMED SERENE PUBLIC SPACE ON THE EASTERN SIDE OF THE BUILDING. **** BUILDING IS DESIGNED ON THE NORTH-SOUTH AXIS PROVIDING GOOD LIGHTING CONDITIONS DURING THE DAY .

PAGE 2

THERE ARE ENTRANCES ON LEVEL 1 : FROM OUTSIDE THE HOSPITAL;**** FROM THE INNER COURTYARD***

AND FROM SOUTH AT THE PATIENT HOTEL RECEPTION ;*** ON LEVELS 2 AND 3 THERE IS SKYWALK JOINING THE OLD BUILDING AND THE NEW ONE .**** THERE ARE FEW SECONDARY ENTRANCES ON LEVEL 1 ALSO .**** THE ONLY FIXED ELEMENTS ARE VERTICAL ACCESS POINTS (ELEVATORS AND BOXED STAIRCASES WITH NECESSARY EMERGENCY EXITS CLOSE TO THEM.) ****AND SERVICES SHAFTS ****

ALL FLOOR LAYOUTS ARE BASED ON THE SAME 6000x6000 MM GRID.

LEVEL 1

4. DAY CARE UNIT
GROUND FLOOR PUBLIC SPACES,
GALLERY ****

LEVEL 2

1. RESEARCH UNIT**

2. RECEPTION UNIT**

3. NON-INVASIVE PART**

5. WARDS, 12 ROOMS**

A TOP PRIORITY WAS FOR DAYLIGHT. THE WIDESPREAD USE OF COLOUR IN THE INTERIORS IS A KEY PART OF THE DESIGN. INTERNAL WOOD PANELS IN COMMON SPACES, WARM COLOURS AND DOMESTIC LIGHTING CONTRIBUTE TO THIS HEALTH RECOVERING ENVIRONMENT. EVERY UNIT HAS RECEPTION AT THE ENTRANCE. FOR THE CASE OF SECURITY ALSO THE PATIENT ROOMS WERE DESIGNED AS BEDROOMS NOT WARDS . ALL WARDS ARE INDIVIDUAL ROOMS. SOME ROOMS HAVE EXPANDED AREA . SOME ROOMS HAVE BALCONIES, BECAUSE OF VOLUMES STICKING OUT OF THE BUILDING . EACH ROOM CONTAINS A BIG AREA WINDOW.

INSIDE, THE CLINICAL AND CLINICAL SUPPORT SPACES ARE SUPPRESSED OR HIDDEN TO HIGHLIGHT SPACES FOR PATIENTS AND THEIR FAMILIES. PRIVATE SPACES AND COMMUNAL AREAS ARE BOTH INSIDE AND OUTSIDE. THOSE OF ELEVATORS, THAT EXPOSE SURROUNDING VIEWS, HAVE TRANSPARENT WALLS. IN LOTS OF LITTLE LOUNGES ARE DESIGNED CLOSE TO THE ELEVATORS.

PAGE 3

LEVEL 3

7. SURGERY

6. INTENSIVE CARE UNIT

WARDS 23 ROOMS

LEVEL 4

WARDS 32 ROOMS

PAGE 4

LEVEL 5

VENTILATION AND INSTALLATIONS

THERE ARE CONFERENCE HALLS

DESIGNED ON LEVELS 6 AND 7 IN THE PATIENT HOTEL WING . ****

LOUNGES ARE DESIGNED ON ALL PATIENT HOTEL LEVELS IN THE MIDDLE AND AT THE SOUTHERN PART OF THE WING EXPOSING WIDE RANGING VIEWS WITH BIG AMOUNT OF PLANTING.****

LEVEL 6

12. PATIENT HOTEL

12.2 CONFERENCE HALL

PAGE 5

LEVEL 7

12. PATIENT HOTEL

12.2 CONFERENCE HALL****

ACCOMMODATING A

CONGREGATION IN AN AREA OF

110 SQ M , THE CHAPEL IS

LOCATED ON LEVEL 8.****

ALL AREA OF THE UPPERMOST

LEVEL IS AN UNCOVERED OUTDOOR

COURTYARD WITH ITS WIDE

RANGING VIEWS.****

LEVEL 8

12. PATIENT HOTEL

12.4 CHAPEL

LEVEL 9

ROOF-TOP GARDEN

PAGE 6

SECTIONS: BUILDING HAS FIVE (

21.5M) AND EIGHT STOREYS IN

HEIGHTS (3.5 M).**** SKYWALK IS

ONLY ON LEVELS 2 AND 3,

BECAUSE OF THE HEIGHT

DIFFERENCES IN NEW BUILDING

AND THE OLD ONE ACCORDING TO

SEPTARY INSTALLATIONS AND THE

MAIN INFRASTRUCTURE DUCTS

ABOVE THE UNITS.****

VENTILATION SHAFTS ARE CLOSE

TO VERTICAL ACCESS POINTS.****

PAGE 7

ELEVATIONS: WINDOWS HAVE BEEN

POSITIONED TO LINE UP WITH

6000 MM GRID. THE FACADES

HAVE ALSO BEEN DESIGNED TO

ALLOW FLEXIBLE WALL POSITIONS

EVERY 1.5M IN THE CORRIDORS.

THE FACADES ARE DEAD IN WHITE

PLASTER, WOODEN PANELS AND

CURTAINWALL. THEY HARMONIZE

WITH BUILDING'S NATURAL SETTING

AND ARE CONTRASTING WITH THE

PREDOMINANT LOCALLY PRECAST

CONCRETE OF THE OLD BUILDING.

PAGE 8

VISUALIZATIONS

FINAL INFO

HOSPITAL

LEVELS 1-5

AREA 20425 M2 + 4085 M2*5M

+2 UNDERGROUND

PATIENT HOTEL

LEVELS 6-8

AREA 5892 M2

ROOMS 90

THERE ARE 18 ELEVATORS ON

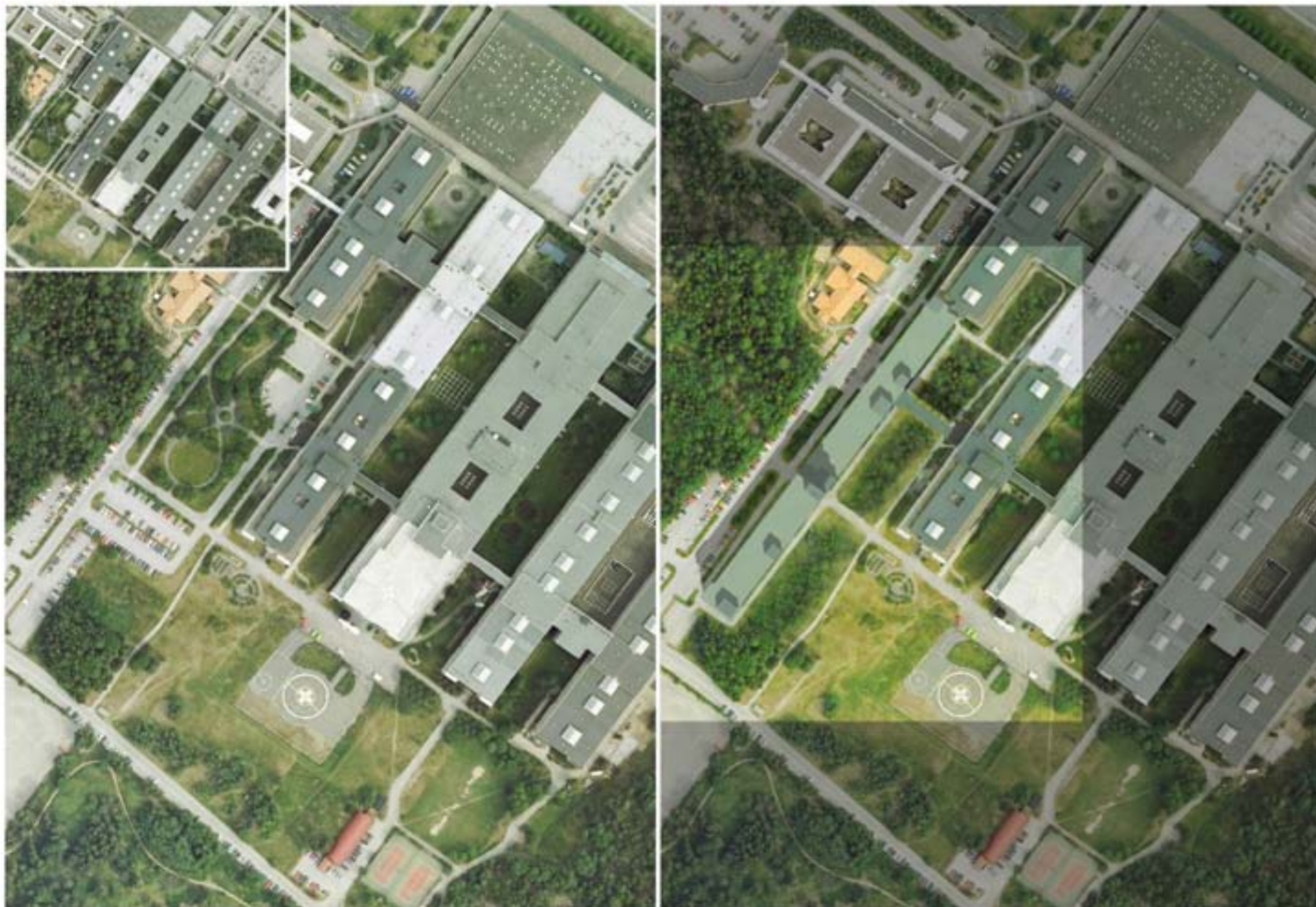
LEVELS 1-6 AND 7 ELEVATORS ON

LEVELS 7-9.

VENTILATION SHAFTS (

205.68M2)

TOTAL FLOOR AREA 26017 M2



CHALMERS ARCHITECTURE - SPACE FOR HEALTHCARE, HOUSING & WORK - NEW KAROLINSKA HUDDINGE HOSPITAL - A.JODKO - TEACHERS P.FRÖST,I.MALMQVIST,B.GROSS 1

